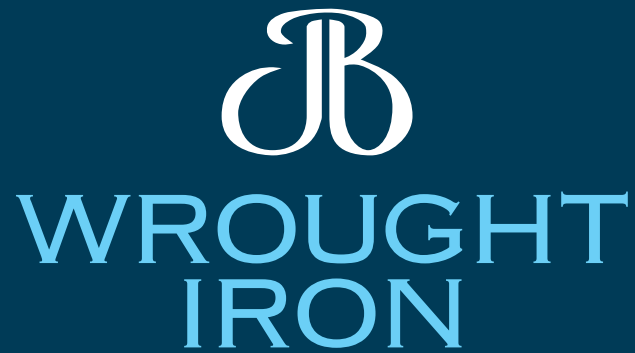
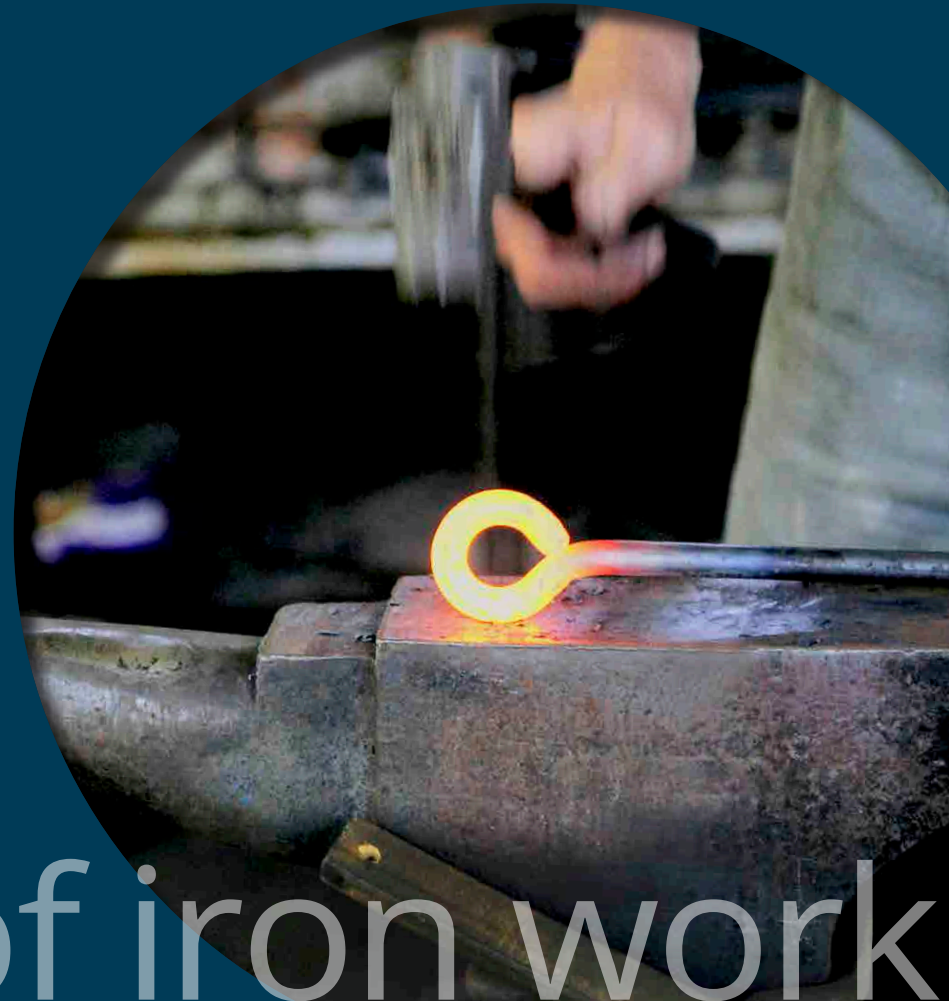


The Design & Quoting Process



www.jbwroughtiron.com.au



the architects of iron work

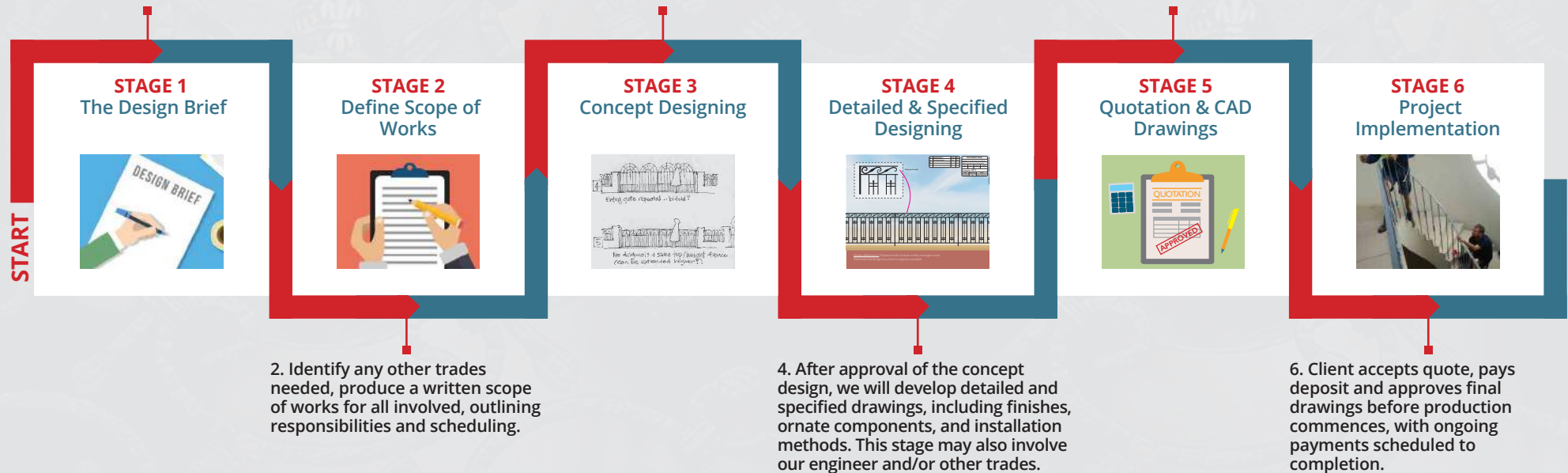
Our goal is to add value to your property with bespoke-designed architectural metalwork. Your home deserves only the best. Added value, guaranteed.

Steps to your Bespoke Wrought Iron Project - At a glance

1. Share your ideas, objectives and specific needs with our design consultant at an on-site meeting to enable us to develop the design brief including budget, delivery time, site constraints, legal and building requirements and more.

3. Architect or designers to create concept drawings for your project. The concept design proposal typically includes 2 design alternatives.

5. Once specified drawings have been created, we can provide an accurate quote and CAD or shop drawings for final client approval.



Your ideas come to life!

The Design Brief Stage

Our design consultant will meet to discuss your initial ideas. Please bring any sketches, photos, notes or website links you have to illustrate your thinking, as these provide an ideal starting point for the design process. After reviewing, our design consultant will create your design brief. The **design brief** typically includes; budget, delivery time, functional requirements, site constraints, legal requirements, building codes and standards.

The design briefing is usually arranged as a site meeting, where our design consultant will take notes, measurements photos and sketches. The fee for the **design brief** service varies according to the time required, and complexity of the project and will be advised at the initial inquiry stage.

Defining the Scope of Works

On multi-trade projects, a defined scope ensures nothing is overlooked. Many of our projects involve stonemasons, waterproofing contractors, electricians, access control suppliers, painters and tilers, each requiring a written **scope of works**, so the client and contractors are clear about responsibilities and timings.

JB Wrought Iron always provides

detailed quotes and **scope of works** documents as well as architectural and shop drawings – essential requirements for all successful projects - particularly larger projects.

Concept Design Stage

Once we have created the **design brief** and **scope of works**, we will outline the work required and the cost to proceed to the next stage - typically hand sketched concepts, simulated views, photomontage or schematic drawings.

Depending on the specific needs, we will engage our in-house, Australian based architect or specialist designer, or our UK-based designer for more traditional, English or European styles of work. Alternatively, we might involve our talented artisan blacksmiths. To see an example of a concept or schematic drawing click [HERE](#).

Typically, we provide two design alternatives in a **concept design** proposal, ensuring the work is architecturally correct.

Other designing options at this stage include photomontages, rendered 3D drawings and/or small sample sections to allow you to see the design in situ/ (or real life).

Detailed & Specified Design Stage

Once you have chosen a preferred concept design, we will detail and specify the concept drawings to provide an accurate quote. This includes: nominating material sizes, ornate component details, finishes, weld and joining methods, surface finish grade, rustproofing method, locks and furniture, electrical items, methods of installation, dimensions and notes. Our consultant engineer may also be involved in the detailing and specifying process.

The cost of this stage of work will be quoted after we present concept drawings. Meetings with other trades on site may also be required to explain the proposed work, discuss methods and advise.

Typically our clients prefer **JB Wrought Iron** to co-ordinate the other trades, but allow them to bill you directly, avoiding any mark up and ensuring each trade takes responsibility for their own work.

Quoting

From detailed and specified drawings and a thorough scope of works, we will provide a comprehensive quote, including provision for supplying detailed CAD drawings for final client

approval before work commences. To see a typical example of a CAD drawing for the front fence and gate of a home click [HERE](#).

Project Implementation

Once the quote is accepted and a deposit paid, we will complete accurate site measuring and often provide a sample section for approval. Approval of the final drawings occurs before production commences, with a progress payment arrangement schedule followed to completion.

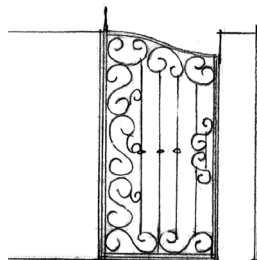


CASE STUDIES



CASE STUDY 1

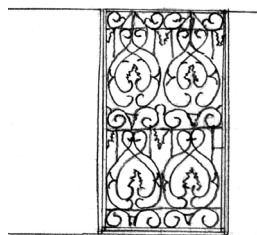
The owners of this substantial, heritage home overlooking the Parramatta River at Hunters Hill wanted a wrought iron-style fence along the driveway, on top of the stone wall and new matching gates. Our in-house architect provided three schematic drawings based on the site photo to provide the high quality boundary they were seeking.



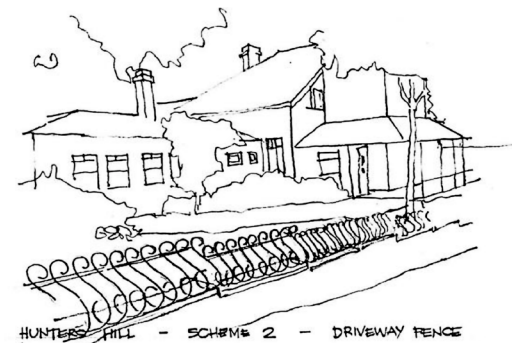
SCHEME 1



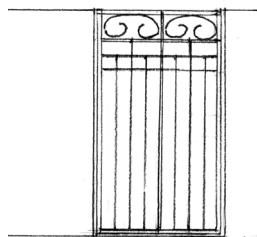
HUNTERS HILL - SCHEME 1 - DRIVEWAY FENCE



SCHEME 2



HUNTERS HILL - SCHEME 2 - DRIVEWAY FENCE



SCHEME 3



HUNTERS HILL - SCHEME 3 - DRIVEWAY FENCE

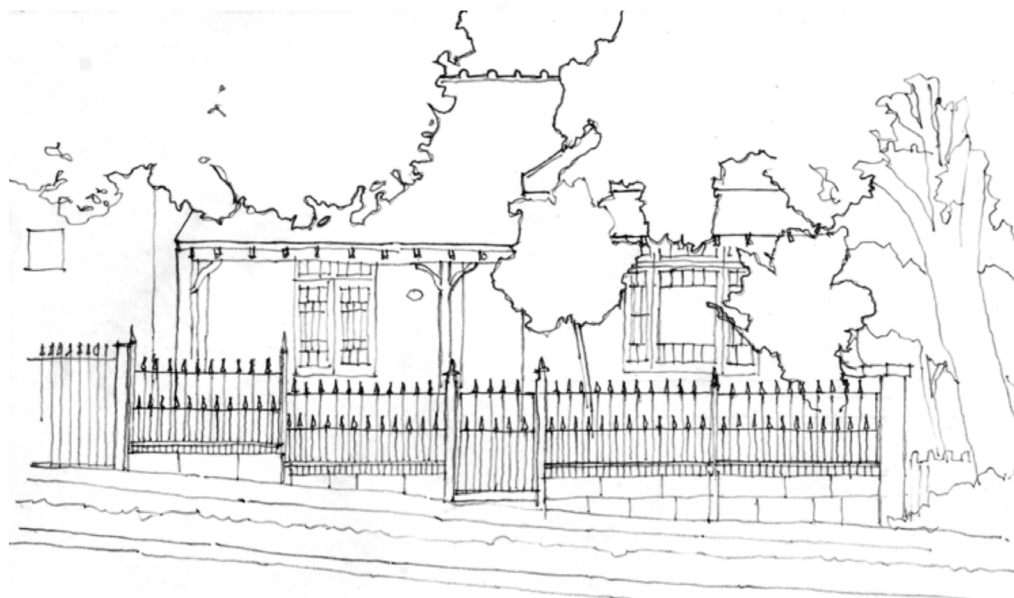
CASE STUDIES

CASE STUDY 2

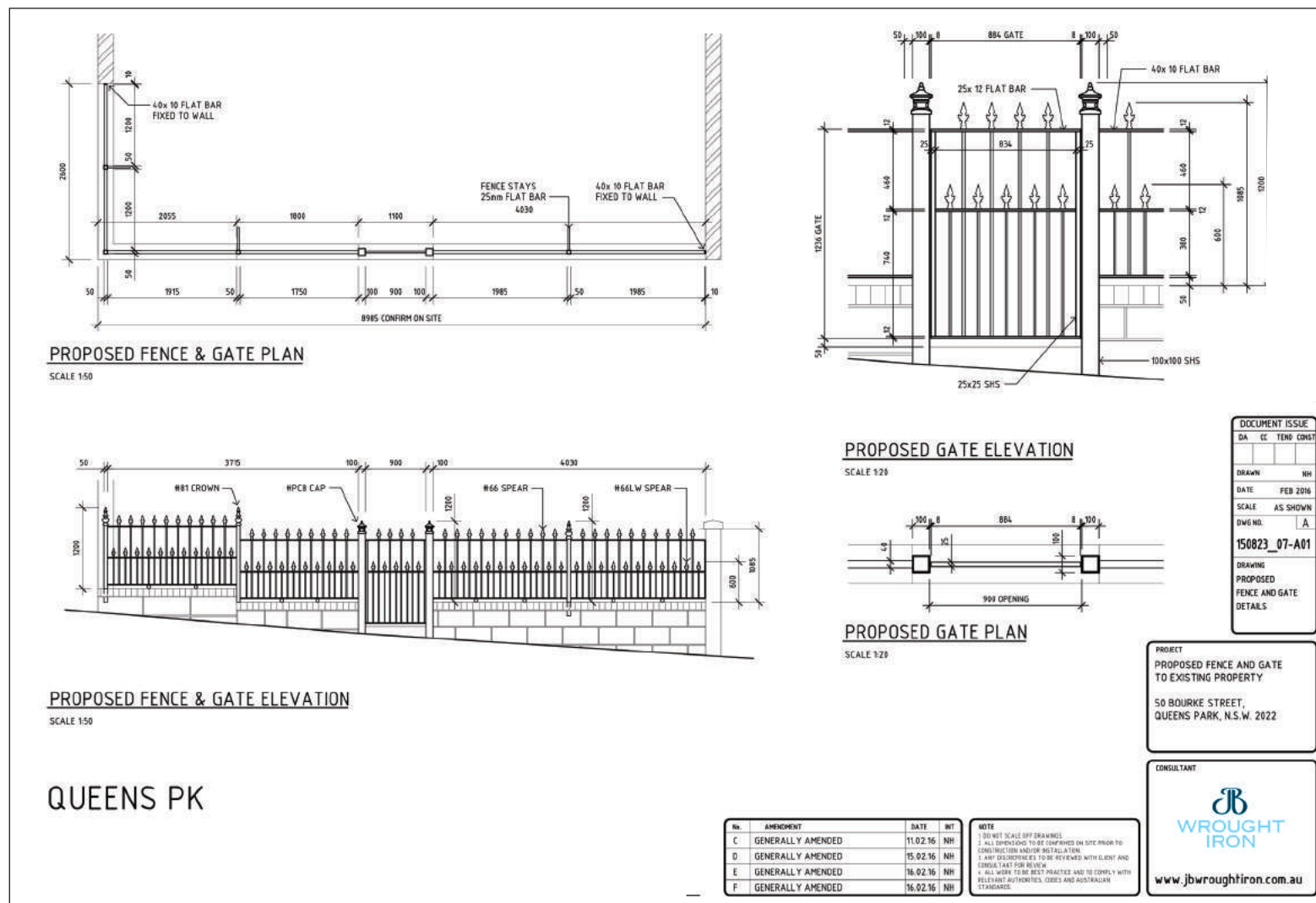
The owner of this Queens Park bungalow required a new metal palisade style fence and entry gate to replace the existing, rotting timber fencing. The client had quite a definite style in mind to suit the property and neighbourhood, and requested some special post features. Our in-house architect drew just one concept sketch, which was approved. Following approval of a detailed CAD drawing we also engaged a stonemason to make good the stonework after our work was installed.



Queens Park - Entry gate and front fence concept sketch.



CASE STUDIES Queens Park - CAD shop drawing.





WROUGHT IRON

Thank You



the architects of iron work